

# PRODUCT INFORMATION PACKET

Model No: 145TTWR6076  
Catalog No: N323  
1,1200,TEFC,145T,3/60/230/460  
Washdown Duty



Regal and Marathon are trademarks of Regal Beloit Corporation or one of its affiliated companies.  
©2018 Regal Beloit Corporation, All Rights Reserved. MC017097E



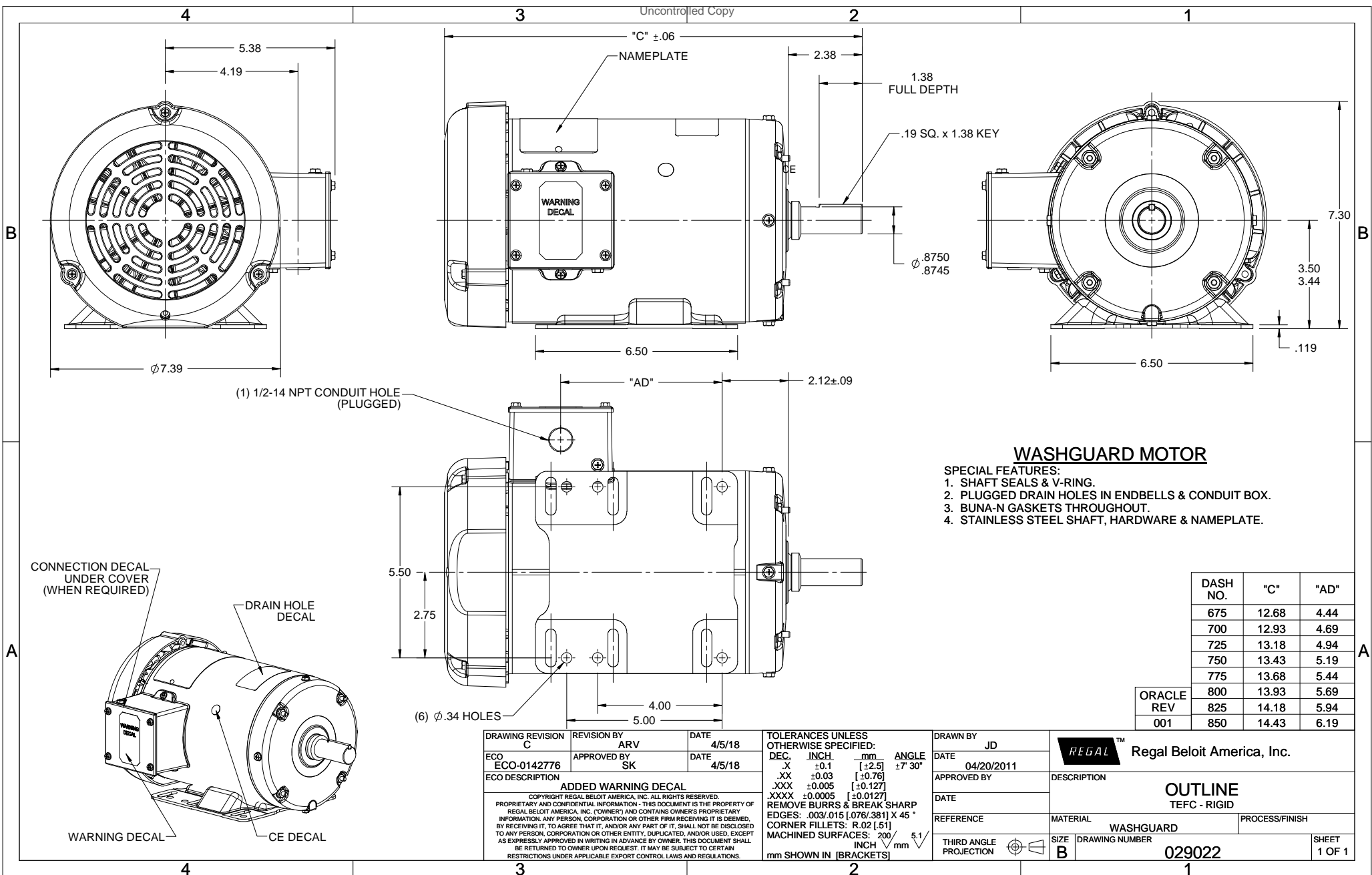
### Nameplate Specifications

Output HP	<b>1 Hp</b>	Output KW	<b>0.75 kW</b>
Frequency	<b>60 Hz</b>	Voltage	<b>230/460 V</b>
Current	<b>3.8/1.9 A</b>	Speed	<b>1170 rpm</b>
Service Factor	<b>1.15</b>	Phase	<b>3</b>
Efficiency	<b>82.5 %</b>	Duty	<b>Continuous</b>
Insulation Class	<b>F</b>	Design Code	<b>B</b>
KVA Code	<b>K</b>	Frame	<b>145T</b>
Enclosure	<b>Totally Enclosed Fan Cooled</b>	Overload Protector	<b>No</b>
Ambient Temperature	<b>40 °C</b>	Drive End Bearing Size	<b>6205</b>
Opp Drive End Bearing Size	<b>6203</b>	UL	<b>Recognized</b>
CSA	<b>Y</b>	CE	<b>Y</b>
IP Code	<b>55</b>		

### Technical Specifications

Electrical Type	<b>Squirrel Cage Inverter Rated</b>	Starting Method	<b>Line Or Inverter</b>
Poles	<b>6</b>	Rotation	<b>Reversible</b>
Mounting	<b>Rigid base</b>	Motor Orientation	<b>Horizontal</b>
Drive End Bearing	<b>Ball</b>	Opp Drive End Bearing	<b>Ball</b>
Frame Material	<b>Rolled Steel</b>	Shaft Type	<b>T</b>
Overall Length	<b>13.43 in</b>	Frame Length	<b>7.50 in</b>
Shaft Diameter	<b>0.875 in</b>	Shaft Extension	<b>2.38 in</b>
Assembly/Box Mounting	<b>F1 Only</b>		
Outline Drawing	<b>029022-750</b>	Connection Diagram	<b>005010.01ME</b>

This is an uncontrolled document once printed or downloaded and is subject to change without notice. Date Created: 06/29/2018



**WASHGUARD MOTOR**

**SPECIAL FEATURES:**

1. SHAFT SEALS & V-RING.
2. PLUGGED DRAIN HOLES IN ENDBELLS & CONDUIT BOX.
3. BUNA-N GASKETS THROUGHOUT.
4. STAINLESS STEEL SHAFT, HARDWARE & NAMEPLATE.

DASH NO.	"C"	"AD"
675	12.68	4.44
700	12.93	4.69
725	13.18	4.94
750	13.43	5.19
775	13.68	5.44
800	13.93	5.69
825	14.18	5.94
850	14.43	6.19

ORACLE REV 001	800 825 850	13.93 14.18 14.43	5.69 5.94 6.19
----------------	-------------------	-------------------------	----------------------

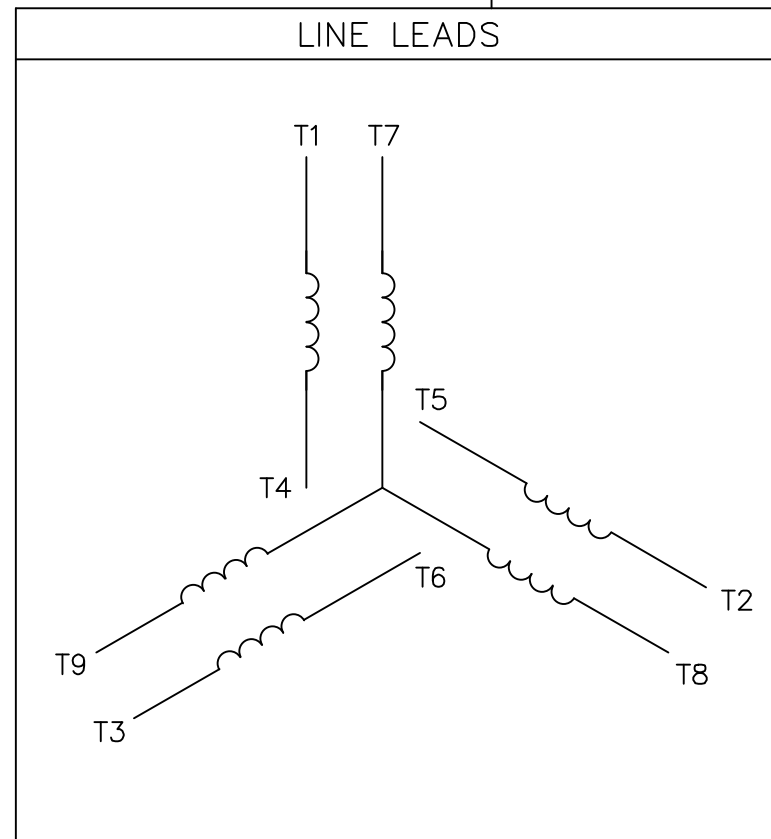
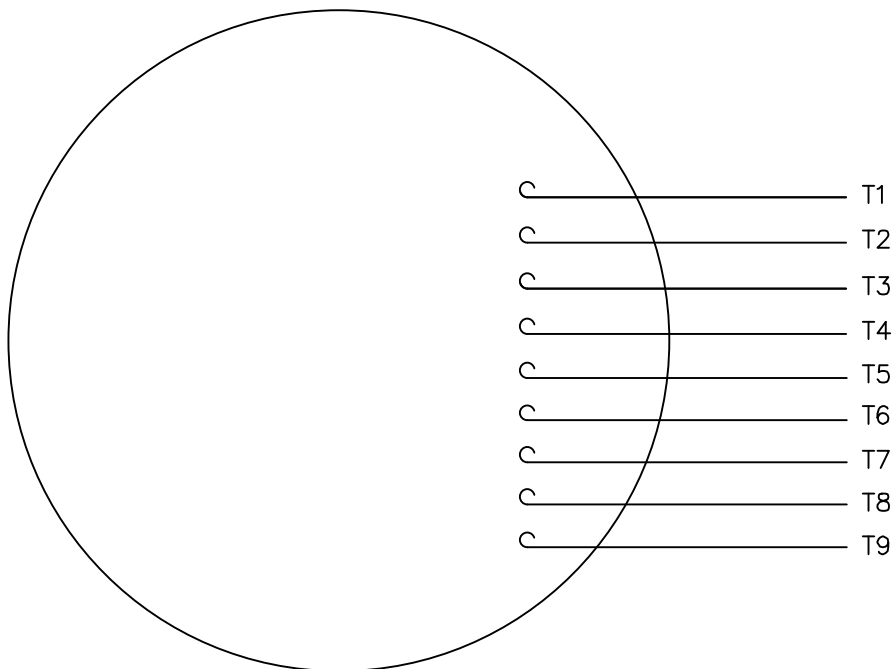
DRAWING REVISION C	REVISION BY ARV	DATE 4/5/18	TOLERANCES UNLESS OTHERWISE SPECIFIED: DEC. INCH mm ANGLE .X ±0.1 [+2.5] ±7-30° .XX ±0.03 [+0.76] .XXX ±0.005 [+0.127] .XXXX ±0.0005 [+0.0127]
ECO ECO-0142776	APPROVED BY SK	DATE 4/5/18	REMOVE BURRS & BREAK SHARP EDGES: .003/.015 [.076/.381] X 45° CORNER FILLETS: R.02 [.51]
ECO DESCRIPTION ADDED WARNING DECAL			MACHINED SURFACES: 200 INCH mm 5.1
<small>COPYRIGHT REGAL BELOIT AMERICA, INC. ALL RIGHTS RESERVED. PROPRIETARY AND CONFIDENTIAL INFORMATION - THIS DOCUMENT IS THE PROPERTY OF REGAL BELOIT AMERICA, INC. ("OWNER") AND CONTAINS OWNER'S PROPRIETARY INFORMATION. ANY PERSON, CORPORATION OR OTHER FIRM RECEIVING IT IS DEEMED, BY RECEIVING IT, TO AGREE THAT IT, AND/OR ANY PART OF IT, SHALL NOT BE DISCLOSED TO ANY PERSON, CORPORATION OR OTHER ENTITY, DUPLICATED, AND/OR USED, EXCEPT AS EXPRESSLY APPROVED IN WRITING IN ADVANCE BY OWNER. THIS DOCUMENT SHALL BE RETURNED TO OWNER UPON REQUEST. IT MAY BE SUBJECT TO CERTAIN RESTRICTIONS UNDER APPLICABLE EXPORT CONTROL LAWS AND REGULATIONS.</small>			

DRAWN BY JD	DATE 04/20/2011	APPROVED BY	DATE
REFERENCE	MATERIAL WASHGUARD	DRAWING NUMBER 029022	PROCESS/FINISH
THIRD ANGLE PROJECTION	SIZE B	DRAWING NUMBER 029022	SHEET 1 OF 1


**REGAL**™ Regal Beloit America, Inc.

**OUTLINE**  
TEFC - RIGID

VIEW FROM OUTSIDE OF MOTOR AT SWITCH END.



VOLTAGE	L1	L2	L3	JOIN & INSULATE
HIGH	T1	T2	T3	(T4,T7) (T5,T8) (T6,T9)
LOW	T1,T7	T2,T8	T3,T9	T4,T5,T6

NO.		REVISION	BY & DATE	CHK	ANG	TOLERANCES UNLESS SPECIFIED	 <b>MARATHON ELECTRIC</b>	DRAWN RDW 04/12/02			
						DEC.		INCHES	CHK		
						.X		±.1	APPD		
						.XX		±.01	SCALE 1=1		
						.XXX		±.005	REF FIG.2-51		
						.XXX	±.0005	TITLE EXTERNAL WIRING DIAGRAM 3 PHASE W/O PROTECTOR			
						.XXXX	±.0005	MAT'L. DECAL - 004014			
						FINISH		FMF			
						NO.		PREV			
THIS DRAWING IN DESIGN AND DETAIL IS OUR PROPERTY AND MUST NOT BE USED EXCEPT IN CONNECTION WITH OUR WORK ALL RIGHTS OF DESIGN AND INVENTION ARE RESERVED THIS IS AN ELECTRONICALLY GENERATED DOCUMENT - DO NOT SCALE THIS PRINT				RFP	04/12/02	CAD FILE		00501001ME	SIZE	DRAWING NO.	REV.
				DIST				A	005010-01ME		



P.O. BOX 9003  
WAUSAU, WI 54401-9003  
PH. 715-675-3311

DATA VOLTS: 460

CERTIFICATION DATA SHEET

CUSTOMER: \_\_\_\_\_  
 ORDER #: \_\_\_\_\_  
 CONN. DIAGRAM: 005010.01ME  
 OUTLINE: 029022-750  
 WINDING: T63681 FR 3  
 SPEED: \_\_\_\_\_  
 CUSTOMER P.O. #: \_\_\_\_\_  
 REFERENCE MODEL #: 145TTWR6076  
 CAT #: N323  
 CUSTOMER PART #: \_\_\_\_\_  
 MOUNTING: F1 ONLY

TYPICAL MOTOR PERFORMANCE DATA

HP	KW	SYNC RPM	FL RPM	FRAME	ENCLOSURE	TYPE	KVA CODE	DESIGN	
1	0.75	1200	1160	145T	TEFC	TFR	K	B	
PH	HZ	VOLTS	AMPS	START TYPE	DUTY	INSL	S.F.	AMB	ELEV.
3	60/50	230/460#208-230/460	55/1.88	LINE OR INVERTER	CONT	F	1.15	40	3300

F.L. EFF	82.5	3/4 LD EFF	82.9	1/2 LD EFF	80.6	GTD EFF	ELECT. TYPE
F.L. PF	63.0	3/4 LD PF	54.7	1/2 LD PF	42.5	0.0	SQ CAGE INV RATED

F.L. TORQUE	LR AMPS @ 460 V	L.R. TORQUE	B.D. TORQUE	F.L. RISE (°C)
4.5 LB-FT	10.7	13.5	15.8	42

@ 3 FT.	POWER	ROTOR WK <sup>3</sup>	MAX. LOAD WK <sup>2</sup>	SAFE STALL TIME	STARTS/HOUR	MOTOR WGT
0 DBA	9 DBA	0.14 LB-FT <sup>2</sup>	0.1 LB-FT <sup>2</sup>	10 SEC.	0	0 LB.

\*\*\* SUPPLEMENTAL INFORMATION \*\*\*

DE BRACKET TYPE	ODE BRACKET TYPE	MOUNT TYPE	MOTOR ORIENTATION	SEVERE DUTY	HAZARDOUS LOCATION	DRIP COVER	SCREENS	PAINT
STANDARD	STANDARD	RIGID	HORIZONTAL	NO	NONE	NO	NONE	HTE - LEESON (EPO)
BEARINGS	GREASE	SHAFT TYPE	SPECIAL DE	SPECIAL ODE	SHAFT MATERIAL	FRAME MATERIAL		
DE ODE BALL BALL 6205	POLYREX EM	T	NONE	NONE	303 STAINLESS (C-501)	ROLLED STEEL		

THERMOSTATS	PROTECTORS	WDG RTD's	BRG RTD's	THERMISTORS	CONTROL	SPACE HEATERS
NONE	NOT	NONE	NONE	NONE	FALSE	NA
R1 (ohms/ph)	R2 (ohms/ph)	X1 (ohms/ph)	X2 (ohms/ph)	Xm (ohms/ph)	VIBRATION (in/sec)	FLOAT
0	0	0	0	0	0.150	ODE

INVERTER TORQUE: CONSTANT 10:1  
 INV. HP SPEED RANGE: NONE

ENCODER: NONE  
 NONE  
 NONE  
 BRAKE: NONE  
 NONE  
 NONE  
 FT-LB: NA  
 VOLTAGE: NONE  
 HZ: NONE

PREPARED BY: EARL BABBITTS  
 DATE: 5/5/2017  
 U.L: VINS, CONST U.L REC

Data Sheet

1451TW86076

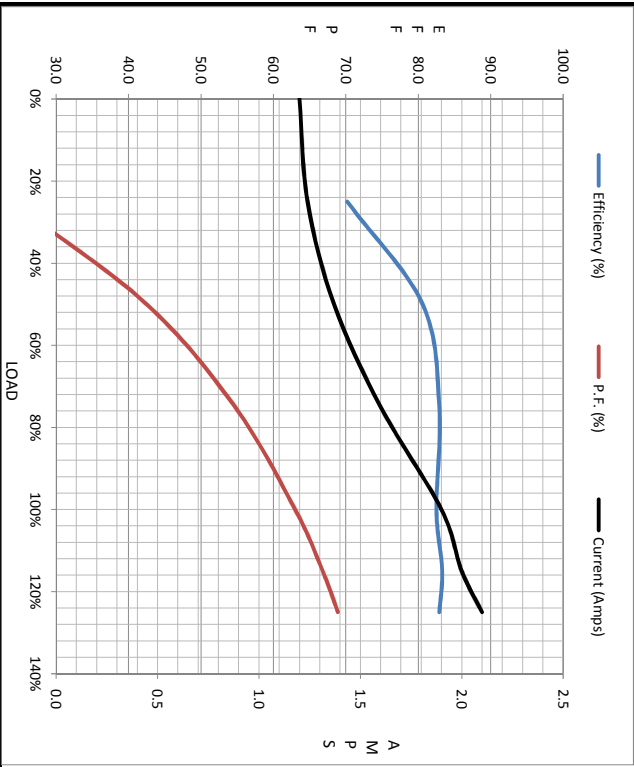


**Submital**  
Data @ 460 V

Date: 5/5/2017  
Customer: EARL BABBITTS  
Attention: EARL BABBITTS  
Submitted by:

Load	Motor Load Data									
	0%	25%	50%	75%	100%	115%	125%	LR		
Current (Amps)	1.20	1.24	1.37	1.60	1.90	2.00	2.10	10.7		
Torque (ft-lb)	0.00	1.10	2.23	3.4	4.5	5.3	5.7	13.5		
RPM	1200	1190	1180	1169	1160	1,150	1145	0		
Efficiency (%)		70.2	80.6	82.9	82.5	83.3	82.9			
P.F. (%)	8.6	23.8	42.5	54.7	63.0	66.8	68.9	0.0		

	Motor Speed Data					Information Block																					
	LR	Pull-Up	BD	Rated	Idle	HP	Frame	Enclosure	Construction	Voltage	Frequency	Design	LR Code letter	Service Factor	Temp Rise @ FL	Duty	Ambient	Elevation	Motor/Shaft wk <sup>2</sup>	Ret Wdg	Sound Pressure @ 1M	VFD Rating	Outline Dwg	Conn. Diag	Additional Specifications:		
Speed (RPM)	0	125	750	1160	1200	1.0	140	TEFC	TFR	/460#208-230~V	60	B	K	1.15	42	CONT	40 °C	1,000 feet	0.14 Lb-Ft <sup>2</sup>	T63681 FR	0	dB(A)	CONSTANT 10:1	029022-750	0050110.01ME		
Current (Amps)	10.7	9.9	7.4	1.90	1.20																						
Torque (ft-lb)	13.5	13.3	15.8	4.5	0.00																						



	R1	R2	X1	X2	Xm
EQUIV CKT (OHMS / PHASE)	0.0000	0.0000	0.0000	0.0000	0.0000
Additional Specifications:					

